

Integrated Mineral Exploration Dataset

SOUTHEAST ARIZONA

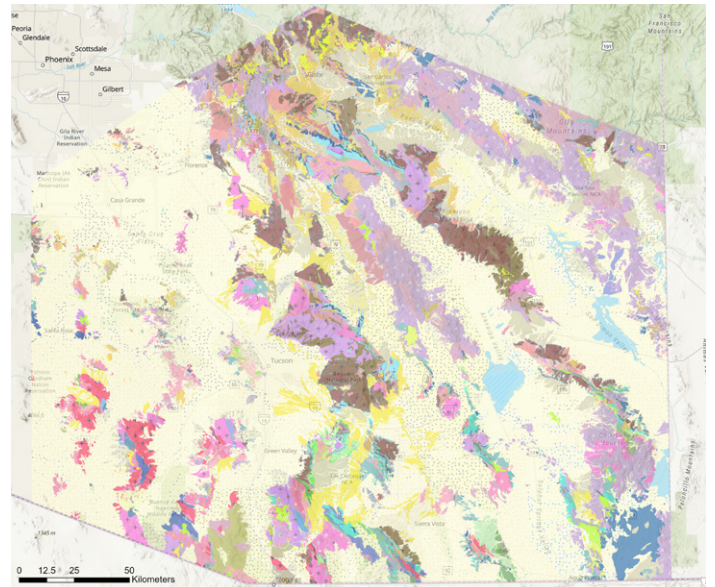


Make your next big discovery

The last data set you will ever need to explore southeastern Arizona's proven and potential resources—explore a top mining destination in the Copper State using the world's most robust mineral exploration dataset. Created with you in mind, so you can do what you do best—explore!

Acquired – Reprocessed – Transformed – Integrated

Only Viridien has gone to the lengths of reprocessing legacy Arizona data to extract its maximum value. Our dataset rescues trapped and siloed data while filling in the data gaps across the geologic spectrum. This includes old reports, schematics and exploration data including bore holes, soil samples and assay results. All data has been through rigorous QC/QA, transformation, harmonization and integration, and is now ready for interpretation and use.



Viridien's data acquisition, aggregation, and harmonization covers almost 60,000 km² of land in southeastern Arizona. The project area is southeast of Phoenix, bordering Mexico and New Mexico.

Integrated all-new gravity and magnetics data

Our data package also includes new airborne geophysical data such as magnetics, gravity and radiometrics with 200-meter primary spacing by 2,000-meter control spacing, and a nominal drape of 120 meters.

After acquisition, our world-class experts QC and merge all data to deliver a seamless data package. All geophysical acquisition data includes derivative products like first vertical derivative and bandpass filtering for pre-Laramide surface expressions.

Finally, our geophysical data is inverted in three-dimensions with a delivery of constrained and unconstrained models for our clients.

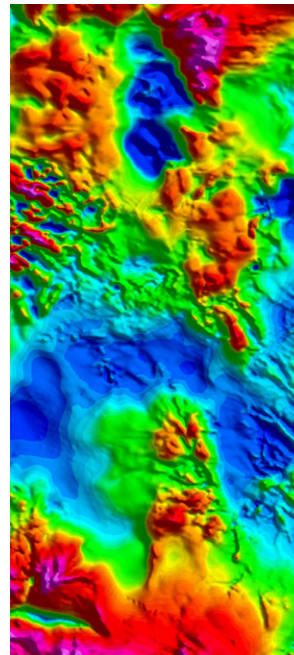
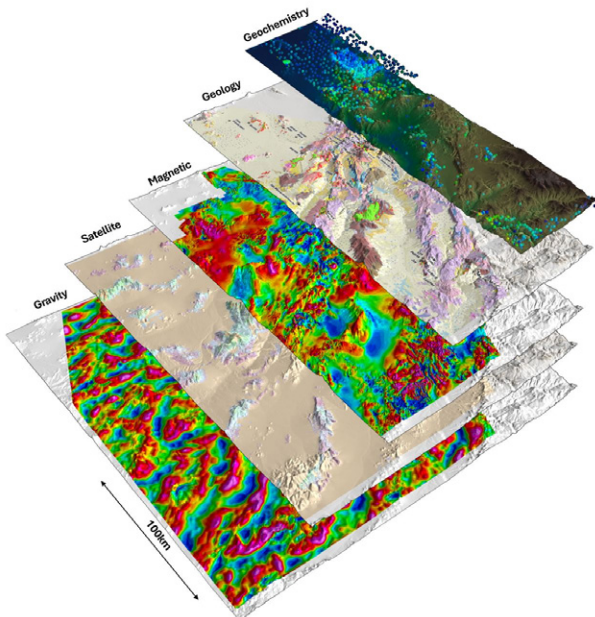
Geologic maps	Spectral maps	DEM models	Drainage model	Optical imagery
Airborne magnetics	Airborne gravity	Airborne radiometric	Magnetotellurics	Legacy geophysics
Seismic interpretation	Borehole data	O&G wells	Geochemical assays	Legacy maps & schematics
Paleoearth & Paleoclimate models	Cultural data	Digital transformation	Database construction	Mineral system studies

SOUTHEAST ARIZONA

Explore regionally with camp-scale resolution data

With unmatched data quantity, quality, derivatives, and delivery, we have created an analytics-ready dataset that frees your exploration team to find the next big discovery.

- Over 275,000 line-kilometers of new airborne magnetics, radiometrics and gravity, acquired on a high-resolution, 200m x 2,000m grid, including line, grid and inversion outputs
- 35 legacy airborne geophysics surveys, harmonized and reprocessed where necessary
- 25,000+ land gravity stations, with associated station and grid outputs
- Completely reworked and seamless optical and multi-spectral satellite mosaics and associated derivative products, including a bare earth digital elevation model, drainage and vegetation, plus over a dozen mineral and alteration maps
- A fully digital and seamless 1:24,000 geological, lithological and structural map updated using satellite data
- Reviewed, updated and corrected database of over 35,000 water wells, including digitized and harmonized lithology logs

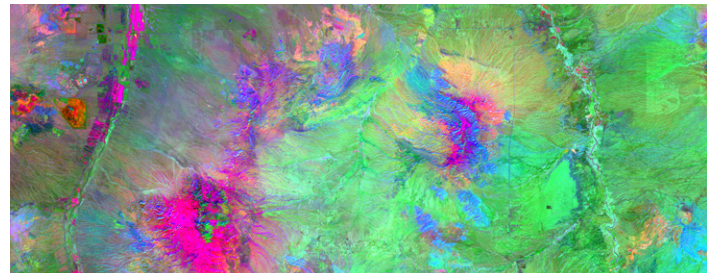


Remote sensing

Spectral data was collected, processed and mosaiced using ASTER, Sentinel and Copernicus for added value. Satellite mapping derivatives highlight minerals and alteration patterns spatially.

Products in this dataset include:

- Mineral maps
- Alteration maps
- New DEM and drainage maps
- 1:25k seamless geological and lithological map



- 150 oil and gas wells, with digitized metadata and wireline logs
- A suite of public domain borehole information, digitized and harmonized, with assay results
- Digitized cross-disciplinary geological and mining data, including geochemistry, geochronology and paleo-data, sourced from almost 1,000,000 pages of public domain data sources
- Extracted data from key technical reports, academic papers and historical mining documents
- 3D joint inversions using the integration of geologic data with geophysical outputs for subsurface models

Reach out to licence today

Rik Brooymans – Technical Integrated Project Manager

Tel: +1-713-304-4750

Rik.Brooymans@viridiengroup.com